



Celebrating Museums 2026



Supported using public funding by
**ARTS COUNCIL
ENGLAND**



Cathrien van Hak
Collections Officer
Kiplin Hall & Gardens
Museum Store Move



Supported using public funding by
**ARTS COUNCIL
ENGLAND**



Museum Store Move

Cathrien van Hak
Kiplin Hall and Gardens



Before....

- 5 stores spread across the Hall
- Collections and non-collection items mixed
- Limited control and recording of RH and T
- Issues around security in places



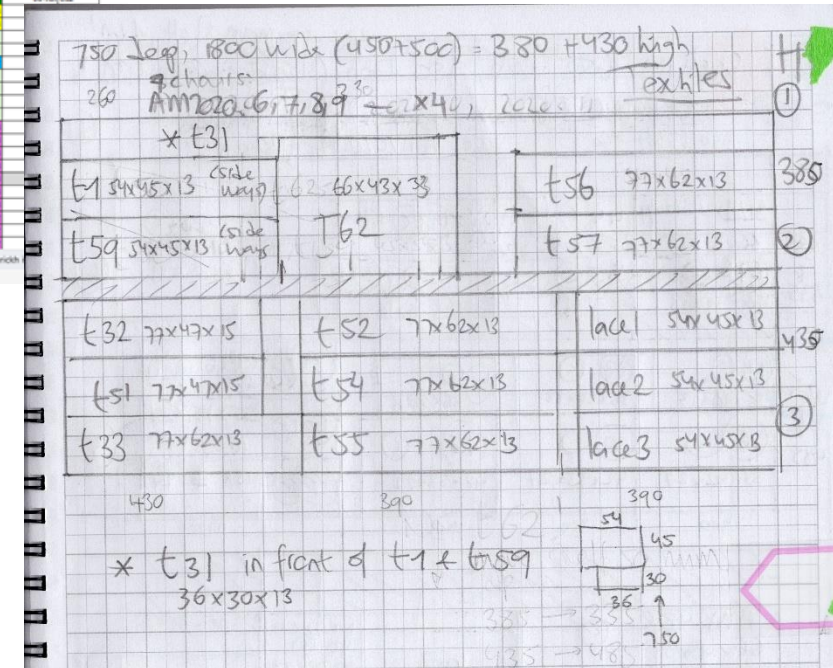
Planning



Kiplin Hall
& Gardens

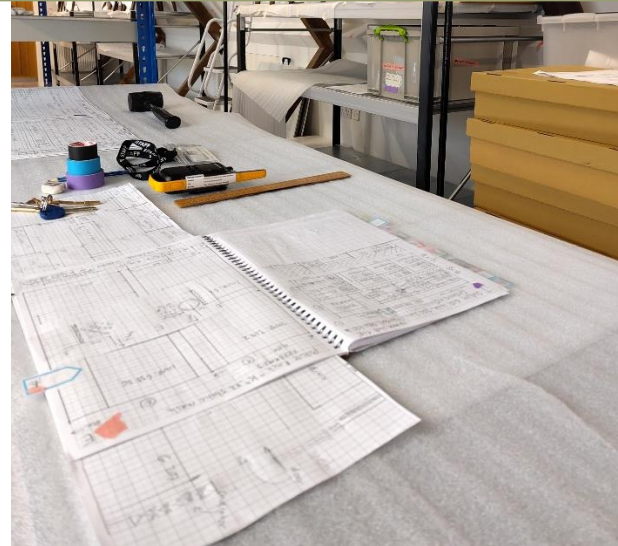
- Another building on-site
- BMS controlled main room
- Foyle Foundation – shelving, staff time, packing materials
- MDN funding – environmental monitoring, black-out, security, additional shelving

box number	content	size - length (cm)	size - width (cm)	size - depth (cm)	volume	status	current rack row	current bay	current shelf	proposed bay	proposed shelf	move in week commencing	updated loc
2	AM box 1 - ceramics					am						2	23-Jun
3	AM box 2 - ceramics					am	CS1					1	23-Jun
4	AM box 3 - metals					am	CS1					1	23-Jun
5	AM travel Box 2					am	CS1					1	18-Aug
6	arch38					arch		North 1				1	06-Jul/CS2
7	arch2 + 7					arch		North 2				1	06-Jul/CS2
8	arch3					arch		North 2				1	06-Jul/CS2
9	arch4					arch		North 2				1	06-Jul/CS2
10	arch5					arch		North 2				1	06-Jul/CS2
11	arch8					arch		North 2				1	06-Jul/CS2
12	arch1					arch						1	06-Jul/CS2
13	arch9					arch		North 1				1	06-Jul/CS2
14	Minnon cast 2023 78					inc		North 2				1	
15	non-collections box 1					inc	CS1						
16	non-collections box 2					inc	CS1						
17	inc2023.35					inc	R1	B1	S3			2	
18	ricksh book box 1					ricksh	CS1						
19	tom prime books box 1					inc	CS1						
20	tom prime books box 2					inc	CS1						
21	tom prime books box 3					inc	CS1						
22	ceramics					ricksh	R1	B2	S4			1	
23	ceramics					ricksh	R1	B1	S4			1	
24	ceramics					ricksh	R1	B1	S2			1	
25	ceramics					ricksh	R1	B1	S4			1	
26	ceramics					ricksh	R1	B1	S4			1	
27	ceramics					ricksh	R1	B2	S4			1	
28	ceramics					ricksh	R1	B1	S4			1	
29	ceramics					ricksh	R1	B2	S4			1	
30	ceramics					ricksh	R1	B2	S4			1	
31	ceramics					ricksh	R1	B2	S4			1	



Moving....

- Project officer April – October
- Re-using materials
- Removal company for large objects
- Additional space added when budget became available
- Mould removal and packaging
- Collections database updated



After....

- Main CS1, non-collections store CS2
- Still some more objects to move over
- Improved environmental monitoring and control
- Improved collections care
- Potential Archive Store move 2026
- Plans for empty spaces in the Hall to be decided in 2026





Sarah Maltby

Strategic Manager

Epworth Old Rectory

***Out of the Box – Improving our
Inclusivity and Relevance***



Supported using public funding by

**ARTS COUNCIL
ENGLAND**



Out of The Box



From this



To this



Using our Activity Plan...well



Young People





The Scullery Maid, Jean-Siméon Chardin c. 1738
Corcoran Collection (William A. Clark Collection)

...also
...managed the household.
Duties would have included
managing the accounts,
planning and cooking meals
and overseeing the servants.
From their letters we know
that the Wesleys had at least
one maid, a caretaker and
employed a nurse when the
children were young.

The key to effective household
management was to be thrifty
and make food and household
items last for as long as
possible. Although the word
"housewife" did not exist, society
valued a well-managed household
because of the high costs of
living. A historian called
"the art of domesticity" almost



Women





People Living with Dementia





Lisa Howarth

Museums, Arts & Heritage Manager

Georgia Lingwood

Collections & Exhibitions Manager

Rotherham Museums

***SELF: There's More to Me Than What
You See***



Supported using public funding by

**ARTS COUNCIL
ENGLAND**

SELF

THERE'S MORE TO ME THAN WHAT YOU SEE

Lisa Howarth – Museums, Arts and Heritage Manager

Georgia Lingwood – Collections and Exhibitions Manager



**CLIFTON
PARK
MUSEUM**

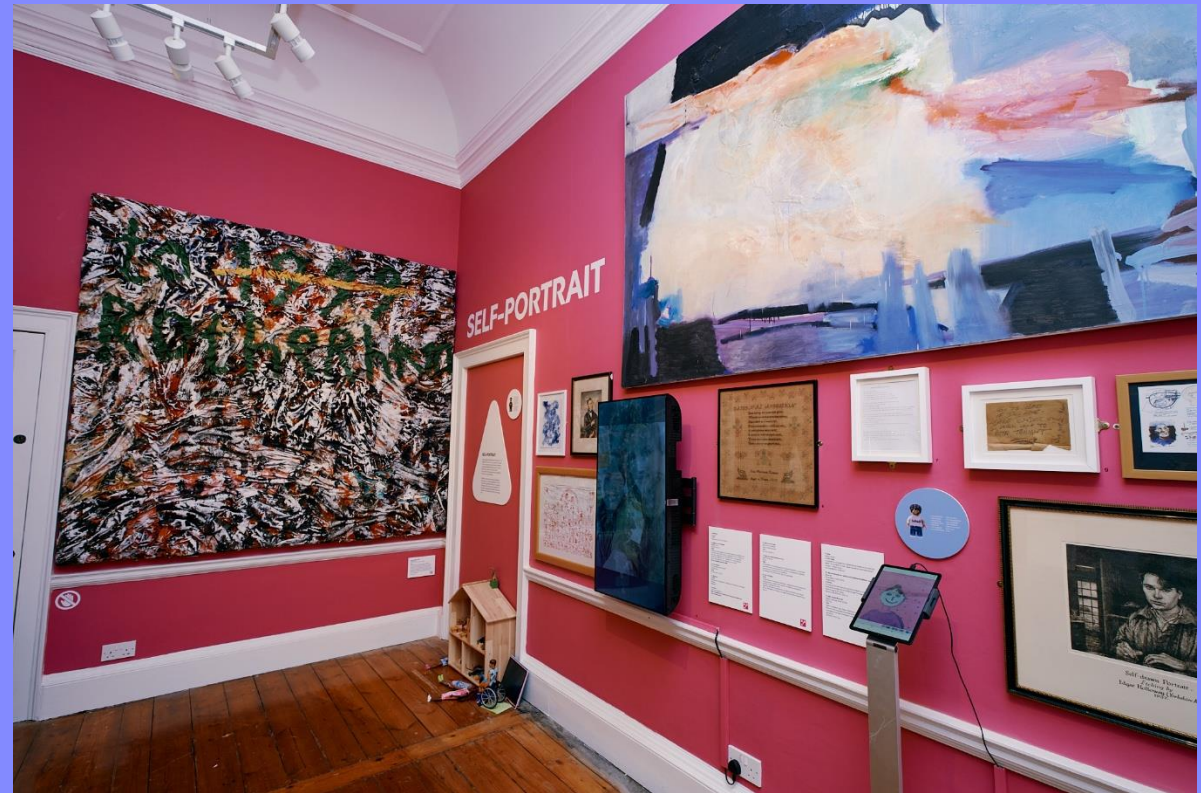
rotherhammuseums.co.uk



SELF: The young people



SELF: The Exhibition



SELF: The Creative Programme





Q&A



Supported using public funding by
**ARTS COUNCIL
ENGLAND**



Review of the Day

Michael Turnpenny



Supported using public funding by

**ARTS COUNCIL
ENGLAND**